

TEST REPORT

Applicant : Shenzhen Yuhe Technology Co., Ltd

Address : Intersection of Huafan Road and Industrial Park Road in Dalang Street, Longhua District, Shenzhen

Report on the submitted sample said to be:

Sample name : safety hammer

Trade Mark : N/A

Model : YH-77

Manufacture : Shenzhen Yuhe Technology Co., Ltd

Address : Intersection of Huafan Road and Industrial Park Road in Dalang Street, Longhua District, Shenzhen

Testing laboratory : Shenzhen Huaxiang Testing Co , Ltd

Address : 201, Building A10, Fuhai Information Port, Fuhai Street, Bao'an District, Shenzhen City

Sample received date : Aug. 11, 2023

Testing period : Aug. 11, 2023 - Aug. 17, 2023

Test Requested:	Conclusion :
The test results comply with the limits of RoHS Directive (EU) 2015/863 and (EU)2017/2102 amending Annex II to Directive 2011/65/EU — Lead, Cadmium, Mercury, Hexavalent Chromium, PBBs and PBDEs Content — Di-(2-ethylhexyl) phthalate(DEHP), Benzylbutyl phthalate(BBP), Dibutyl phthalate (DBP), Diisobutyl phthalate(DIBP) Content	Pass

***** FOR FURTHER DETAILS, PLEASE REFER TO THE FOLLOWING PAGE(S) *****

Shenzhen Huaxiang Testing Co., Ltd



Drafted By: _____
 (Kevin su)

Approved By: _____
 LAB Manager: Amy jiang

Date: _____
 Aug. 17, 2023



Test Part Description:..

Specimen No.	Description.
01	glass
02	Aluminum alloy housing
03	Leather material
04	Adhesive plastic base
05	Black plastic
06	Screw
07	Black plastic
08	spring
09	blade
10	Tungsten steel head

TEST RESULT:
1. Lead, Cadmium, Mercury, Hexavalent Chromium, PBBs and PBDEs—RoHS Directive (EU) 2015/863.

Test Items	Unit	Test Method	Result			MDL	Limit
			01	02	03		
Lead (Pb)	mg/kg	IEC 62321-5:2013, ICP-OES	N.D.	N.D.	N.D.	2	1000
Mercury (Hg)	mg/kg	IEC 62321-4:2013+A1:2017*, ICP-OES	N.D.	N.D.	N.D.	2	1000
Cadmium(Cd)	mg/kg	IEC 62321-5:2013, ICP-OES	N.D.	N.D.	N.D.	2	100
Hexavalent Chromium (CrVI)	µg/cm ²	IEC 62321-7-1:2015, UV-VIS	N.D.	N.D.	N.D.	0.10	0.10
Monobromobiphenyl	mg/kg	IEC 62321-6:2015, GC-MS	N.D.	N.D.	N.D.	5	-
Dibromobiphenyl	mg/kg	IEC 62321-6:2015, GC-MS	N.D.	N.D.	N.D.	5	-
Tribromobiphenyl	mg/kg	IEC 62321-6:2015, GC-MS	N.D.	N.D.	N.D.	5	-
Tetrabromobiphenyl	mg/kg	IEC 62321-6:2015, GC-MS	N.D.	N.D.	N.D.	5	-
Pentabromobiphenyl	mg/kg	IEC 62321-6:2015, GC-MS	N.D.	N.D.	N.D.	5	-
Hexabromobiphenyl	mg/kg	IEC 62321-6:2015, GC-MS	N.D.	N.D.	N.D.	5	-
Heptabromobiphenyl	mg/kg	IEC 62321-6:2015, GC-MS	N.D.	N.D.	N.D.	5	-
Octabromobiphenyl	mg/kg	IEC 62321-6:2015, GC-MS	N.D.	N.D.	N.D.	5	-
Nonabromobiphenyl	mg/kg	IEC 62321-6:2015, GC-MS	N.D.	N.D.	N.D.	5	-
Decabromobiphenyl	mg/kg	IEC 62321-6:2015, GC-MS	N.D.	N.D.	N.D.	5	-
Sum of PBBs	mg/kg	-	N.D.	N.D.	N.D.	-	1000
Monobromodiphenyl ether	mg/kg	IEC 62321-6:2015, GC-MS	N.D.	N.D.	N.D.	5	-
Dibromodiphenyl ether	mg/kg	IEC 62321-6:2015, GC-MS	N.D.	N.D.	N.D.	5	-
Tribromodiphenyl ether	mg/kg	IEC 62321-6:2015, GC-MS	N.D.	N.D.	N.D.	5	-
Tetrabromodiphenyl ether	mg/kg	IEC 62321-6:2015, GC-MS	N.D.	N.D.	N.D.	5	-
Pentabromodiphenyl ether	mg/kg	IEC 62321-6:2015, GC-MS	N.D.	N.D.	N.D.	5	-
Hexabromodiphenyl ether	mg/kg	IEC 62321-6:2015, GC-MS	N.D.	N.D.	N.D.	5	-
Heptabromodiphenyl ether	mg/kg	IEC 62321-6:2015, GC-MS	N.D.	N.D.	N.D.	5	-
Octabromodiphenyl ether	mg/kg	IEC 62321-6:2015, GC-MS	N.D.	N.D.	N.D.	5	-
Nonabromodiphenyl ether	mg/kg	IEC 62321-6:2015, GC-MS	N.D.	N.D.	N.D.	5	-
Decabromodiphenyl ether	mg/kg	IEC 62321-6:2015, GC-MS	N.D.	N.D.	N.D.	5	-
Sum of PBDEs	mg/kg	-	N.D.	N.D.	N.D.	-	1000

Test Items	Unit	Test Method	Result			MDL	Limit
			04	05	06		
Lead (Pb)	mg/kg	IEC 62321-5:2013, ICP-OES	N.D.	N.D.	N.D.	2	1000
Mercury (Hg)	mg/kg	IEC 62321-4:2013+A1:2017*, ICP-OES	N.D.	N.D.	N.D.	2	1000
Cadmium(Cd)	mg/kg	IEC 62321-5:2013, ICP-OES	N.D.	N.D.	N.D.	2	100
Hexavalent Chromium (CrVI)	µg/cm ²	IEC 62321-7-1:2015, UV-VIS	N.D.	N.D.	N.D.	0.10	0.10
Monobromobiphenyl	mg/kg	IEC 62321-6:2015, GC-MS	N.D.	N.D.	N.D.	5	-
Dibromobiphenyl	mg/kg	IEC 62321-6:2015, GC-MS	N.D.	N.D.	N.D.	5	-
Tribromobiphenyl	mg/kg	IEC 62321-6:2015, GC-MS	N.D.	N.D.	N.D.	5	-
Tetrabromobiphenyl	mg/kg	IEC 62321-6:2015, GC-MS	N.D.	N.D.	N.D.	5	-
Pentabromobiphenyl	mg/kg	IEC 62321-6:2015, GC-MS	N.D.	N.D.	N.D.	5	-
Hexabromobiphenyl	mg/kg	IEC 62321-6:2015, GC-MS	N.D.	N.D.	N.D.	5	-
Heptabromobiphenyl	mg/kg	IEC 62321-6:2015, GC-MS	N.D.	N.D.	N.D.	5	-
Octabromobiphenyl	mg/kg	IEC 62321-6:2015, GC-MS	N.D.	N.D.	N.D.	5	-
Nonabromobiphenyl	mg/kg	IEC 62321-6:2015, GC-MS	N.D.	N.D.	N.D.	5	-
Decabromobiphenyl	mg/kg	IEC 62321-6:2015, GC-MS	N.D.	N.D.	N.D.	5	-
Sum of PBBs	mg/kg	-	N.D.	N.D.	N.D.	-	1000
Monobromodiphenyl ether	mg/kg	IEC 62321-6:2015, GC-MS	N.D.	N.D.	N.D.	5	-
Dibromodiphenyl ether	mg/kg	IEC 62321-6:2015, GC-MS	N.D.	N.D.	N.D.	5	-
Tribromodiphenyl ether	mg/kg	IEC 62321-6:2015, GC-MS	N.D.	N.D.	N.D.	5	-
Tetrabromodiphenyl ether	mg/kg	IEC 62321-6:2015, GC-MS	N.D.	N.D.	N.D.	5	-
Pentabromodiphenyl ether	mg/kg	IEC 62321-6:2015, GC-MS	N.D.	N.D.	N.D.	5	-
Hexabromodiphenyl ether	mg/kg	IEC 62321-6:2015, GC-MS	N.D.	N.D.	N.D.	5	-
Heptabromodiphenyl ether	mg/kg	IEC 62321-6:2015, GC-MS	N.D.	N.D.	N.D.	5	-
Octabromodiphenyl ether	mg/kg	IEC 62321-6:2015, GC-MS	N.D.	N.D.	N.D.	5	-
Nonabromodiphenyl ether	mg/kg	IEC 62321-6:2015, GC-MS	N.D.	N.D.	N.D.	5	-
Decabromodiphenyl ether	mg/kg	IEC 62321-6:2015, GC-MS	N.D.	N.D.	N.D.	5	-
Sum of PBDEs	mg/kg	-	N.D.	N.D.	N.D.	-	1000

Test Items	Unit	Test Method	Result			MDL	Limit
			07	08	09		
Lead (Pb)	mg/kg	IEC 62321-5:2013, ICP-OES	N.D.	N.D.	N.D.	2	1000
Mercury (Hg)	mg/kg	IEC 62321-4:2013+A1:2017*, ICP-OES	N.D.	N.D.	N.D.	2	1000
Cadmium(Cd)	mg/kg	IEC 62321-5:2013, ICP-OES	N.D.	N.D.	N.D.	2	100
Hexavalent Chromium (CrVI)	µg/cm ²	IEC 62321-7-1:2015, UV-VIS	N.D.	N.D.	N.D.	0.10	0.10
Monobromobiphenyl	mg/kg	IEC 62321-6:2015, GC-MS	N.D.	N.D.	N.D.	5	-
Dibromobiphenyl	mg/kg	IEC 62321-6:2015, GC-MS	N.D.	N.D.	N.D.	5	-
Tribromobiphenyl	mg/kg	IEC 62321-6:2015, GC-MS	N.D.	N.D.	N.D.	5	-
Tetrabromobiphenyl	mg/kg	IEC 62321-6:2015, GC-MS	N.D.	N.D.	N.D.	5	-
Pentabromobiphenyl	mg/kg	IEC 62321-6:2015, GC-MS	N.D.	N.D.	N.D.	5	-
Hexabromobiphenyl	mg/kg	IEC 62321-6:2015, GC-MS	N.D.	N.D.	N.D.	5	-
Heptabromobiphenyl	mg/kg	IEC 62321-6:2015, GC-MS	N.D.	N.D.	N.D.	5	-
Octabromobiphenyl	mg/kg	IEC 62321-6:2015, GC-MS	N.D.	N.D.	N.D.	5	-
Nonabromobiphenyl	mg/kg	IEC 62321-6:2015, GC-MS	N.D.	N.D.	N.D.	5	-
Decabromobiphenyl	mg/kg	IEC 62321-6:2015, GC-MS	N.D.	N.D.	N.D.	5	-
Sum of PBBs	mg/kg	-	N.D.	N.D.	N.D.	-	1000
Monobromodiphenyl ether	mg/kg	IEC 62321-6:2015, GC-MS	N.D.	N.D.	N.D.	5	-
Dibromodiphenyl ether	mg/kg	IEC 62321-6:2015, GC-MS	N.D.	N.D.	N.D.	5	-
Tribromodiphenyl ether	mg/kg	IEC 62321-6:2015, GC-MS	N.D.	N.D.	N.D.	5	-
Tetrabromodiphenyl ether	mg/kg	IEC 62321-6:2015, GC-MS	N.D.	N.D.	N.D.	5	-
Pentabromodiphenyl ether	mg/kg	IEC 62321-6:2015, GC-MS	N.D.	N.D.	N.D.	5	-
Hexabromodiphenyl ether	mg/kg	IEC 62321-6:2015, GC-MS	N.D.	N.D.	N.D.	5	-
Heptabromodiphenyl ether	mg/kg	IEC 62321-6:2015, GC-MS	N.D.	N.D.	N.D.	5	-
Octabromodiphenyl ether	mg/kg	IEC 62321-6:2015, GC-MS	N.D.	N.D.	N.D.	5	-
Nonabromodiphenyl ether	mg/kg	IEC 62321-6:2015, GC-MS	N.D.	N.D.	N.D.	5	-
Decabromodiphenyl ether	mg/kg	IEC 62321-6:2015, GC-MS	N.D.	N.D.	N.D.	5	-
Sum of PBDEs	mg/kg	-	N.D.	N.D.	N.D.	-	1000

Test Items	Unit	Test Method	Result	MDL	Limit
			10		
Lead (Pb)	mg/kg	IEC 62321-5:2013, ICP-OES	N.D.	2	1000
Mercury (Hg)	mg/kg	IEC 62321-4:2013+A1:2017*, ICP-OES	N.D.	2	1000
Cadmium(Cd)	mg/kg	IEC 62321-5:2013, ICP-OES	N.D.	2	100
Hexavalent Chromium (CrVI)	µg/cm ²	IEC 62321-7-1:2015, UV-VIS	N.D.	0.10	0.10
Monobromobiphenyl	mg/kg	IEC 62321-6:2015, GC-MS	N.D.	5	-
Dibromobiphenyl	mg/kg	IEC 62321-6:2015, GC-MS	N.D.	5	-
Tribromobiphenyl	mg/kg	IEC 62321-6:2015, GC-MS	N.D.	5	-
Tetrabromobiphenyl	mg/kg	IEC 62321-6:2015, GC-MS	N.D.	5	-
Pentabromobiphenyl	mg/kg	IEC 62321-6:2015, GC-MS	N.D.	5	-
Hexabromobiphenyl	mg/kg	IEC 62321-6:2015, GC-MS	N.D.	5	-
Heptabromobiphenyl	mg/kg	IEC 62321-6:2015, GC-MS	N.D.	5	-
Octabromobiphenyl	mg/kg	IEC 62321-6:2015, GC-MS	N.D.	5	-
Nonabromobiphenyl	mg/kg	IEC 62321-6:2015, GC-MS	N.D.	5	-
Decabromobiphenyl	mg/kg	IEC 62321-6:2015, GC-MS	N.D.	5	-
Sum of PBBs	mg/kg	-	N.D.	-	1000
Monobromodiphenyl ether	mg/kg	IEC 62321-6:2015, GC-MS	N.D.	5	-
Dibromodiphenyl ether	mg/kg	IEC 62321-6:2015, GC-MS	N.D.	5	-
Tribromodiphenyl ether	mg/kg	IEC 62321-6:2015, GC-MS	N.D.	5	-
Tetrabromodiphenyl ether	mg/kg	IEC 62321-6:2015, GC-MS	N.D.	5	-
Pentabromodiphenyl ether	mg/kg	IEC 62321-6:2015, GC-MS	N.D.	5	-
Hexabromodiphenyl ether	mg/kg	IEC 62321-6:2015, GC-MS	N.D.	5	-
Heptabromodiphenyl ether	mg/kg	IEC 62321-6:2015, GC-MS	N.D.	5	-
Octabromodiphenyl ether	mg/kg	IEC 62321-6:2015, GC-MS	N.D.	5	-
Nonabromodiphenyl ether	mg/kg	IEC 62321-6:2015, GC-MS	N.D.	5	-
Decabromodiphenyl ether	mg/kg	IEC 62321-6:2015, GC-MS	N.D.	5	-
Sum of PBDEs	mg/kg	-	N.D.	-	1000

Note:

1. mg/kg = milligram per kilogram = ppm
2. N.D. = Not Detected (< MDL)
3. MDL = Method Detection Limit
4. "-" = Not Regulated
5. Boiling-water-extraction:
 Negative = Absence of Cr(VI) coating / surface layer: the detected concentration in boiling-water-extraction solution is less than 0.10µg with 1cm² sample surface area.
 Positive = Presence of Cr(VI) coating / surface layer: the detected concentration in boiling-water-extraction solution is greater than 0.13µg with 1cm² sample surface area.
 Inconclusive = the detected concentration in boiling-water-extraction solution is greater than 0.10µg and less than 0.13µg with 1cm² sample surface area.
6. Positive = result be regarded as not comply with RoHS requirement

7. Negative = result be regarded as comply with RoHS requiremen

2. Di-(2-ethylhexyl) phthalate(DEHP), Benzylbutyl phthalate(BBP), Dibutyl phthalate (DBP), Diisobutyl phthalate (DIBP) Content—RoHS Directive (EU) 2015/863.

Test method: With reference to IEC 62321-8:2017*, analysis was performed by GC-MS.

Test Items	Unit	Result			MDL	Limit
		01	02	03		
Di-(2-ethylhexyl) phthalate (DEHP)	mg/kg	N.D.	N.D.	N.D.	50	1000
Benzylbutyl phthalate (BBP)	mg/kg	N.D.	N.D.	N.D.	50	1000
Dibutyl phthalate (DBP)	mg/kg	N.D.	N.D.	N.D.	50	1000
Diisobutyl phthalate(DIBP)	mg/kg	N.D.	N.D.	N.D.	50	1000

Test Items	Unit	Result			MDL	Limit
		04	05	06		
Di-(2-ethylhexyl) phthalate (DEHP)	mg/kg	N.D.	N.D.	N.D.	50	1000
Benzylbutyl phthalate (BBP)	mg/kg	N.D.	N.D.	N.D.	50	1000
Dibutyl phthalate (DBP)	mg/kg	N.D.	N.D.	N.D.	50	1000
Diisobutyl phthalate(DIBP)	mg/kg	N.D.	N.D.	N.D.	50	1000

Test Items	Unit	Result			MDL	Limit
		07	08	09		
Di-(2-ethylhexyl) phthalate (DEHP)	mg/kg	N.D.	N.D.	N.D.	50	1000
Benzylbutyl phthalate (BBP)	mg/kg	N.D.	N.D.	N.D.	50	1000
Dibutyl phthalate (DBP)	mg/kg	N.D.	N.D.	N.D.	50	1000
Diisobutyl phthalate(DIBP)	mg/kg	N.D.	N.D.	N.D.	50	1000

Test Items	Unit	Result	MDL	Limit
		10		
Di-(2-ethylhexyl) phthalate (DEHP)	mg/kg	N.D.	50	1000
Benzylbutyl phthalate (BBP)	mg/kg	N.D.	50	1000
Dibutyl phthalate (DBP)	mg/kg	N.D.	50	1000
Diisobutyl phthalate(DIBP)	mg/kg	N.D.	50	1000

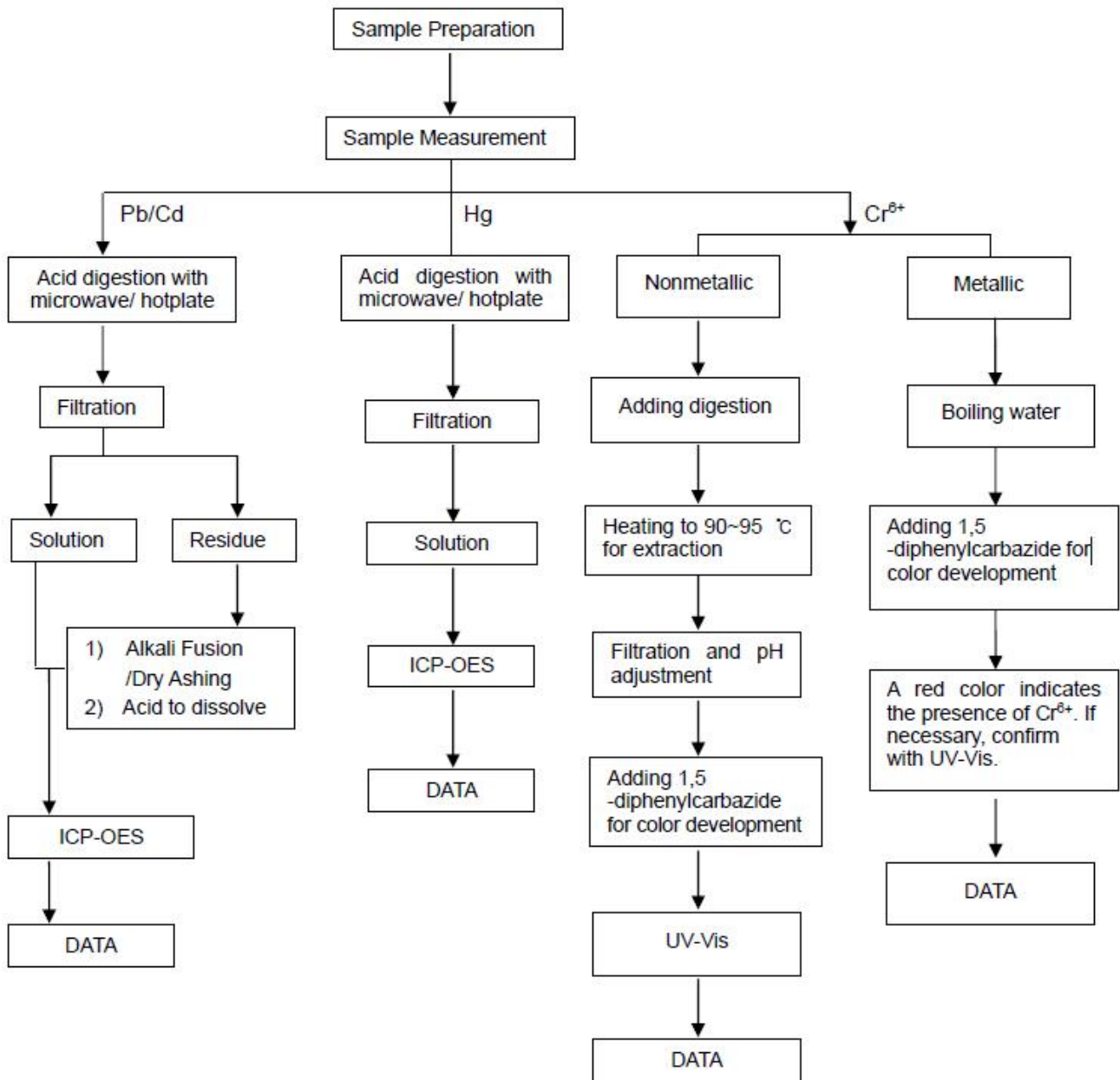
Note:

1. mg/kg = milligram per kilogram = ppm
2. N.D. = Not Detected (<MDL)
3. MDL = Method detection limit
4. “*”=The test method of Phthalates is not authorized by CNAS

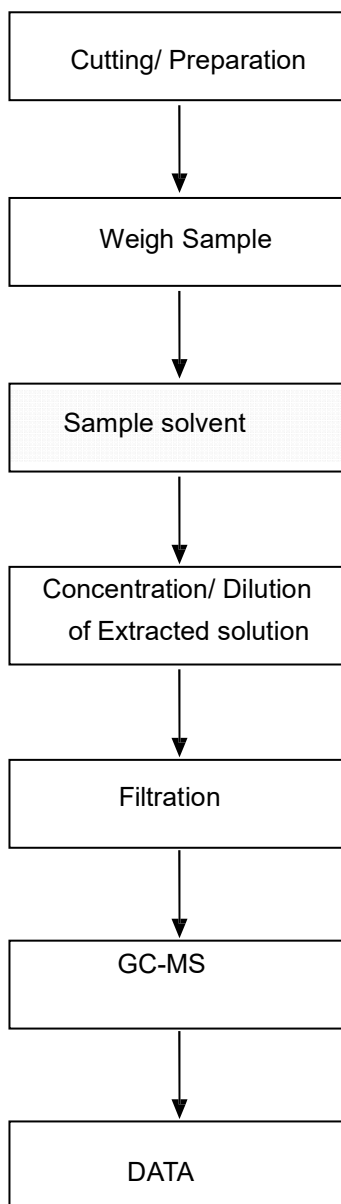
FLOW CHART FOR ROHS TESTING:

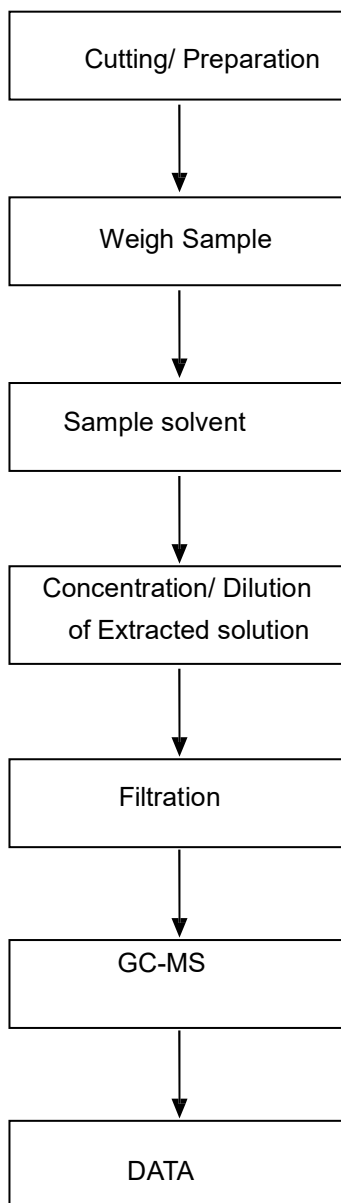
Pb/Cd/Hg/Cr6+ Testing Flow Chart

1) These samples were dissolved totally by pre-conditioning method according to below flow chart (Cr⁶⁺ test method excluded)

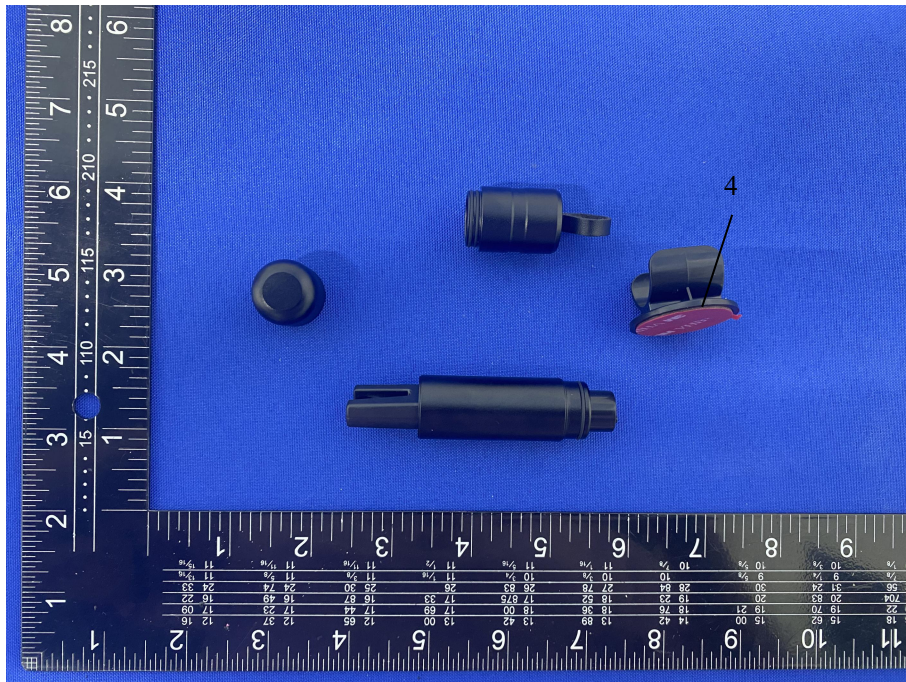
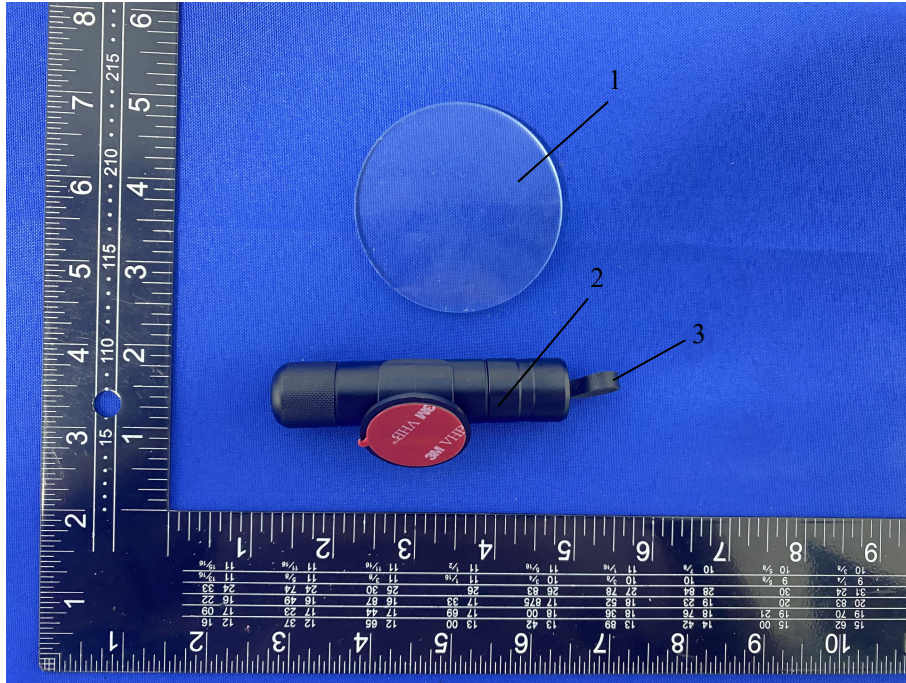


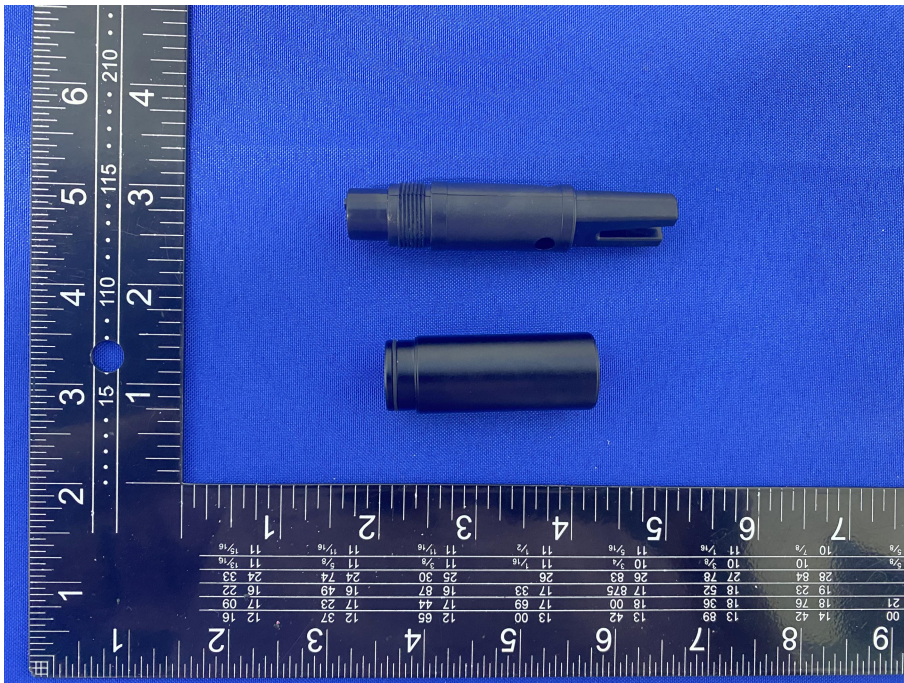
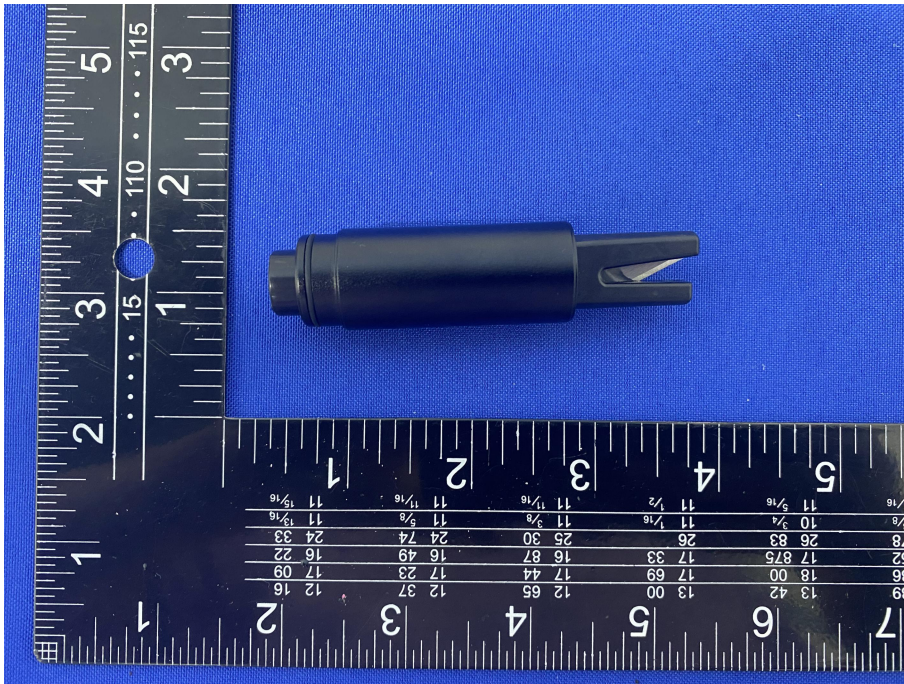
PBBs/PBDEs Testing Flow Chart

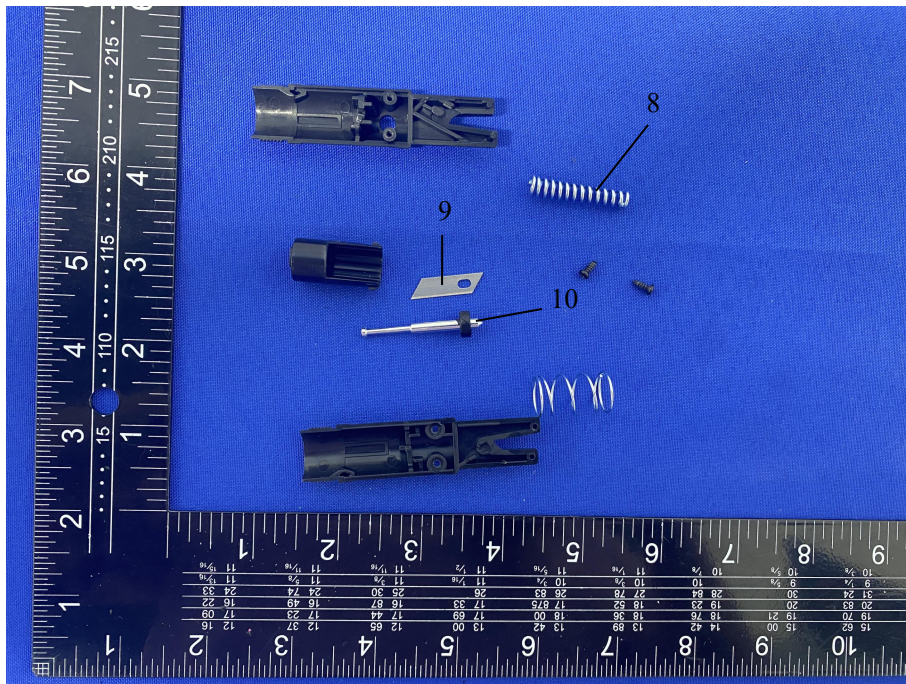
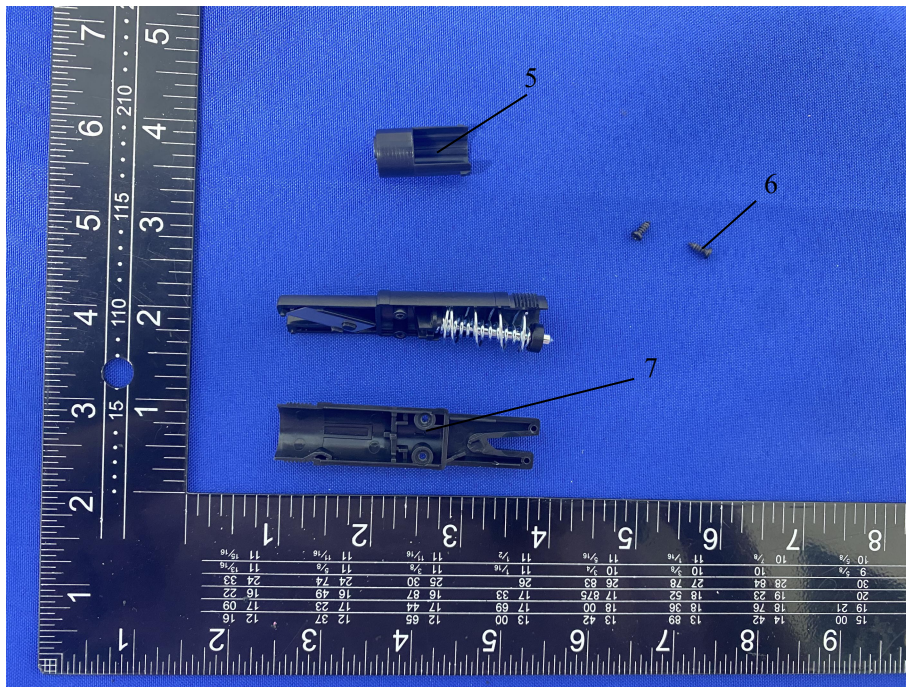


Phthalates Testing Flow Chart

PHOTOGRAPH OF SAMPLE:







***** THE END *****



Test Report

Report No: BSTDG211221010701CR

Date: Dec. 08, 2021

Page 1 of 7

Applicant : Shenzhen Yuhe Technology Co., Ltd
Address : No. 16, Sanhe overseas Chinese zone 2, Tongsheng community, Dalang street, Longhua District, Shenzhen

The following sample(s) was /were submitted and identified on behalf of the clients as:

Sample Name : Vehicle mounted safety hammer
Trademark : N/A
Main test model : PYC11
Additional models : N/A
Sample Received Date : Dec. 08, 2021
Testing Period : Dec. 08, 2021
Test Requested : Selected test (s) in the selected parts as requested by client with the RoHS 2 Directive 2011/65/EU Annex II (EU) 2015/863 as last amended by Directive (EU) 2017/2102.
Test Method : Please refer to next page(s).
Test Result : Please refer to next page(s).

Signed for and on behalf of



Tony Qian/ Approved Signatory

This report shall not be altered, increased or deleted. The results shown in this test report refer only to the sample(s) tested. Without written approval of BST, this test report shall not be copied except in full and published as advertisement. BST Chemical Lab.

Dongguan BST Testing Co., Ltd.

A1201-1204 Xinsanqi of Dongbao Road, Dongcheng District,
Dongguan, Guangdong, China

Tel: 400-9626168/ 800-9990305

Http://www.bst-lab.com E-mail: christina@bst-lab.com



Test Report

Report No: BSTDG211221010701CR

Date: Dec. 08, 2021

Page 2 of 7

Test Content:

Test Item(s)	Test Method	Reference	Unit	Limit	MDL
Cadmium(Cd)	IEC 62321-5:2013	ICP-OES	mg/kg	100	2
Lead(Pb)	IEC 62321-5:2013	ICP-OES	mg/kg	1000	2
Mercury(Hg)	IEC 62321-4:2013+AMD1:2017	ICP-OES	mg/kg	1000	2
Hexavalent Chromium(CrVI) (Metal)	IEC 62321-7-1:2015	UV-Vis	µg/cm ²	0.13	0.1
Hexavalent Chromium(CrVI) (Nonmetal)	IEC 62321-7-2:2017	UV-Vis	mg/kg	1000	8
PBBs (Next form)	IEC 62321-6:2015	GC-MS	mg/kg	1000	5
PBDEs (Next form)	IEC 62321-6:2015	GC-MS	mg/kg	1000	5
Dibutyl Phthalate(DBP)	IEC 62321-8:2017	GC-MS	mg/kg	1000	30
Butyl benzyl phthalate (BBP)	IEC 62321-8:2017	GC-MS	mg/kg	1000	30
Di-(2-ethylhexyl) Phthalate(DEHP)	IEC 62321-8:2017	GC-MS	mg/kg	1000	30
Diisobutyl phthalate (DIBP)	IEC 62321-8:2017	GC-MS	mg/kg	1000	30

PBBs		PBDEs	
Monobromobiphenyl	Hexabromobiphenyl	Monobromodiphenyl ether	Hexabromodiphenyl ether
Dibromobiphenyl	Heptabromobiphenyl	Dibromodiphenyl ether	Heptabromodiphenyl ether
Tribromobiphenyl	Octabromobiphenyl	Tribromodiphenyl ether	Octabromodiphenyl ether
Tetrabromobiphenyl	Nonabromobiphenyl	Tetrabromodiphenyl ether	Nonabromodiphenyl ether
Pentabromobiphenyl	Decabromobiphenyl	Pentabromodiphenyl ether	Decabromodiphenyl ether

This report shall not be altered, increased or deleted. The results shown in this test report refer only to the sample(s) tested. Without written approval of BST, this test report shall not be copied except in full and published as advertisement. BST Chemical Lab.

Dongguan BST Testing Co., Ltd.

A1201-1204 Xinsanqi of Dongbao Road, Dongcheng District,
Dongguan, Guangdong, China

Tel: 400-9626168/ 800-9990305

Http://www.bst-lab.com

E-mail: christina@bst-lab.com



Test Report

Report No: BSTDG211221010701CR

Date: Dec. 08, 2021

Page 3 of 7

Sample Description:

No.	Description	Name
1	Black plastic	Shell
2	Black plastic	Trestle
3	White metal	Shell
4	White metal	Metal Cover
5	White metal	Spring
6	White metal	Firing Pin
7	White metal	Razor Blade
8	Black metal	Screw
9	Rubber	Sealing ring

Test Result

Test Item(s)	No.1	No.2	No.3	No.4	No.5
Cadmium (Cd)	N.D.	N.D.	N.D.	N.D.	N.D.
Lead (Pb)	N.D.	N.D.	N.D.	N.D.	N.D.
Mercury (Hg)	N.D.	N.D.	N.D.	N.D.	N.D.
Hexavalent Chromium (CrVI)	N.D.	N.D.	N.D.	N.D.	N.D.
PBBs	N.D.	N.D.	--	--	--
PBDEs	N.D.	N.D.	--	--	--
Dibutyl Phthalate (DBP)	N.D.	N.D.	--	--	--
Butyl benzyl phthalate (BBP)	N.D.	N.D.	--	--	--
Di-(2-ethylhexyl) Phthalate (DEHP)	N.D.	N.D.	--	--	--
Diisobutyl phthalate (DIBP)	N.D.	N.D.	--	--	--

This report shall not be altered, increased or deleted. The results shown in this test report refer only to the sample(s) tested. Without written approval of BST, this test report shall not be copied except in full and published as advertisement. BST Chemical Lab.

Dongguan BST Testing Co., Ltd.

A1201-1204 Xinsanqi of Dongbao Road, Dongcheng District,
Dongguan, Guangdong, China

Tel: 400-9626168/ 800-9990305

[Http://www.bst-lab.com](http://www.bst-lab.com)

E-mail: christina@bst-lab.com



Test Report

Report No: BSTDG211221010701CR

Date: Dec. 08, 2021

Page 4 of 7

Test Item(s)	No.6	No.7	No.8	No.9
Cadmium (Cd)	N.D.	N.D.	N.D.	N.D.
Lead (Pb)	N.D.	N.D.	N.D.	N.D.
Mercury (Hg)	N.D.	N.D.	N.D.	N.D.
Hexavalent Chromium (CrVI)	N.D.	N.D.	N.D.	N.D.
PBBs	--	--	--	N.D.
PBDEs	--	--	--	N.D.
Dibutyl Phthalate (DBP)	--	--	--	N.D.
Butyl benzyl phthalate (BBP)	--	--	--	N.D.
Di-(2-ethylhexyl) Phthalate (DEHP)	--	--	--	N.D.
Diisobutyl phthalate (DIBP)	--	--	--	N.D.

Note:

1. mg/kg= ppm
2. N.D.= Not Detected(<MDL)
3. MDL = Method Detection Limit
4. -- = No Testing
5. when Cr(VI) in a sample is detected below the 0.10 $\mu\text{g}/\text{cm}^2$ LOQ (limit of quantification), the sample is considered to be negative for Cr(VI). Since Cr(VI) may not be uniformly distributed in the coating even within the same sample batch, a "grey zone" between 0.10 $\mu\text{g}/\text{cm}^2$ and 0.13 $\mu\text{g}/\text{cm}^2$ has been established as "inconclusive" to reduce inconsistent results due to unavoidable coating variations. In this case, additional testing may be necessary to confirm the presence of Cr(VI). When Cr(VI) is detected above 0.13 $\mu\text{g}/\text{cm}^2$, the sample is considered to be positive for the presence of Cr(VI) in the coating layer. unavoidable coating variations may influence the determination Information on storage conditions and production date of the tested sample is unavailable and thus Cr(VI) results represent status of the sample at the time of testing.

This report shall not be altered, increased or deleted. The results shown in this test report refer only to the sample(s) tested. Without written approval of BST, this test report shall not be copied except in full and published as advertisement. BST Chemical Lab.

Dongguan BST Testing Co., Ltd.

A1201-1204 Xinsanqi of Dongbao Road, Dongcheng District,
Dongguan, Guangdong, China

Tel: 400-9626168/ 800-9990305

Http://www.bst-lab.com

E-mail: christina@bst-lab.com



Test Report

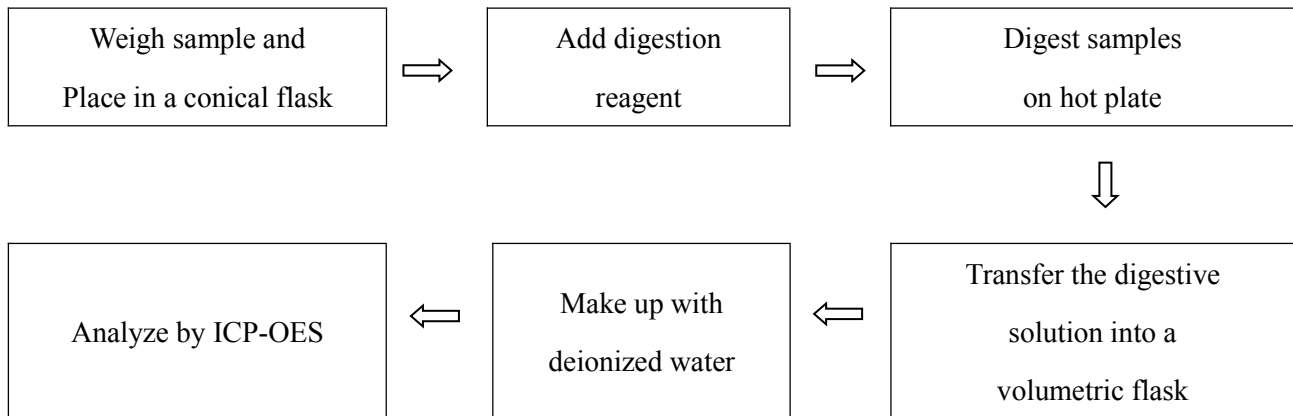
Report No: BSTDG211221010701CR

Date: Dec. 08, 2021

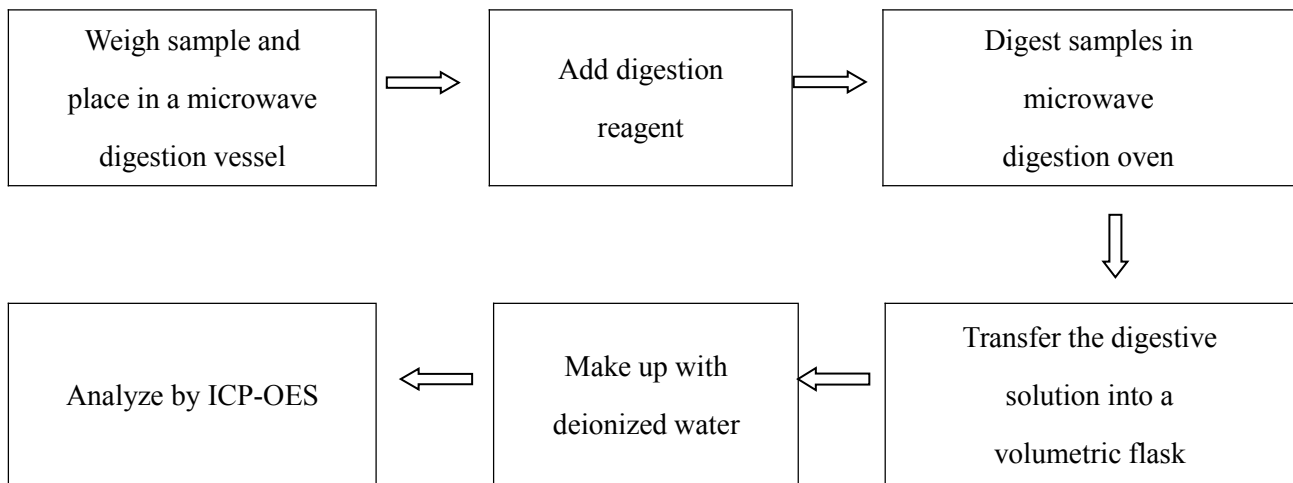
Page 5 of 7

Test Process:

1. Test for Cd/Pb Content

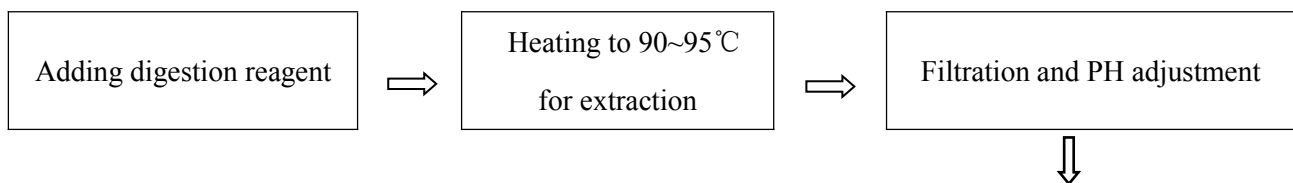


2. Test for Hg Content



3. Test for Chromium (VI) Content

Nonmetal material



This report shall not be altered, increased or deleted. The results shown in this test report refer only to the sample(s) tested. Without written approval of BST, this test report shall not be copied except in full and published as advertisement. BST Chemical Lab.

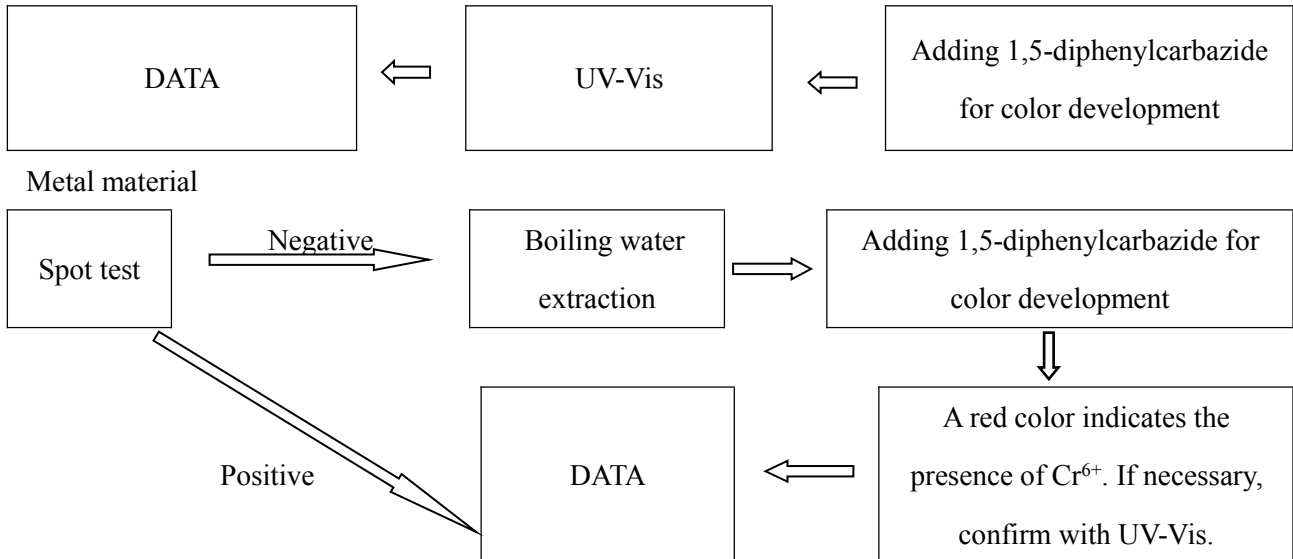


Test Report

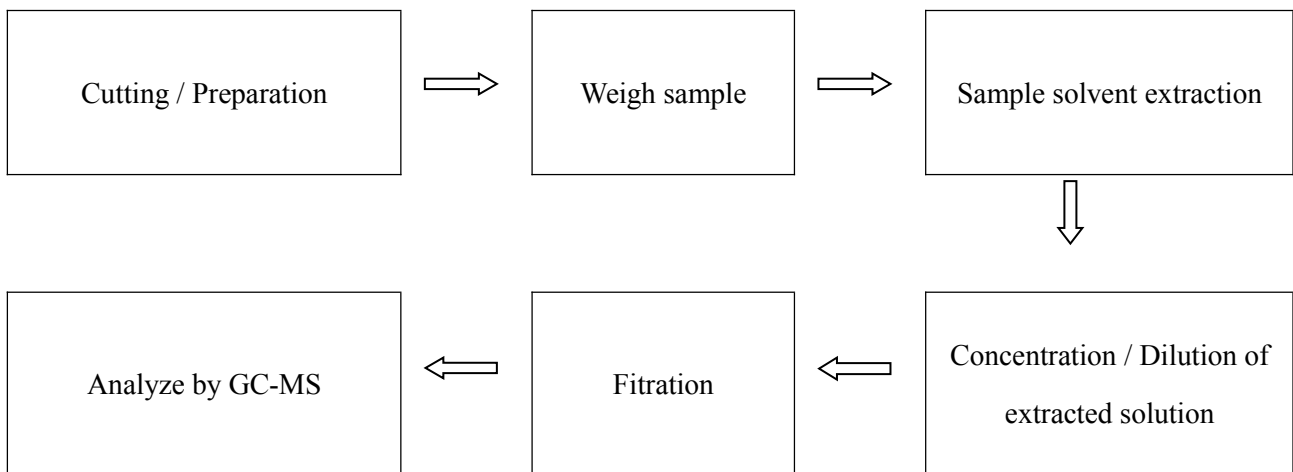
Report No: BSTDG211221010701CR

Date: Dec. 08, 2021

Page 6 of 7



4. Test for DBP, BBP, DEHP, DIBP, PBB, PBDE Content



This report shall not be altered, increased or deleted. The results shown in this test report refer only to the sample(s) tested. Without written approval of BST, this test report shall not be copied except in full and published as advertisement. BST Chemical Lab.

Dongguan BST Testing Co., Ltd.

A1201-1204 Xinsanqi of Dongbao Road, Dongcheng District,
Dongguan, Guangdong, China

Tel: 400-9626168/ 800-9990305

Http://www.bst-lab.com E-mail: christina@bst-lab.com



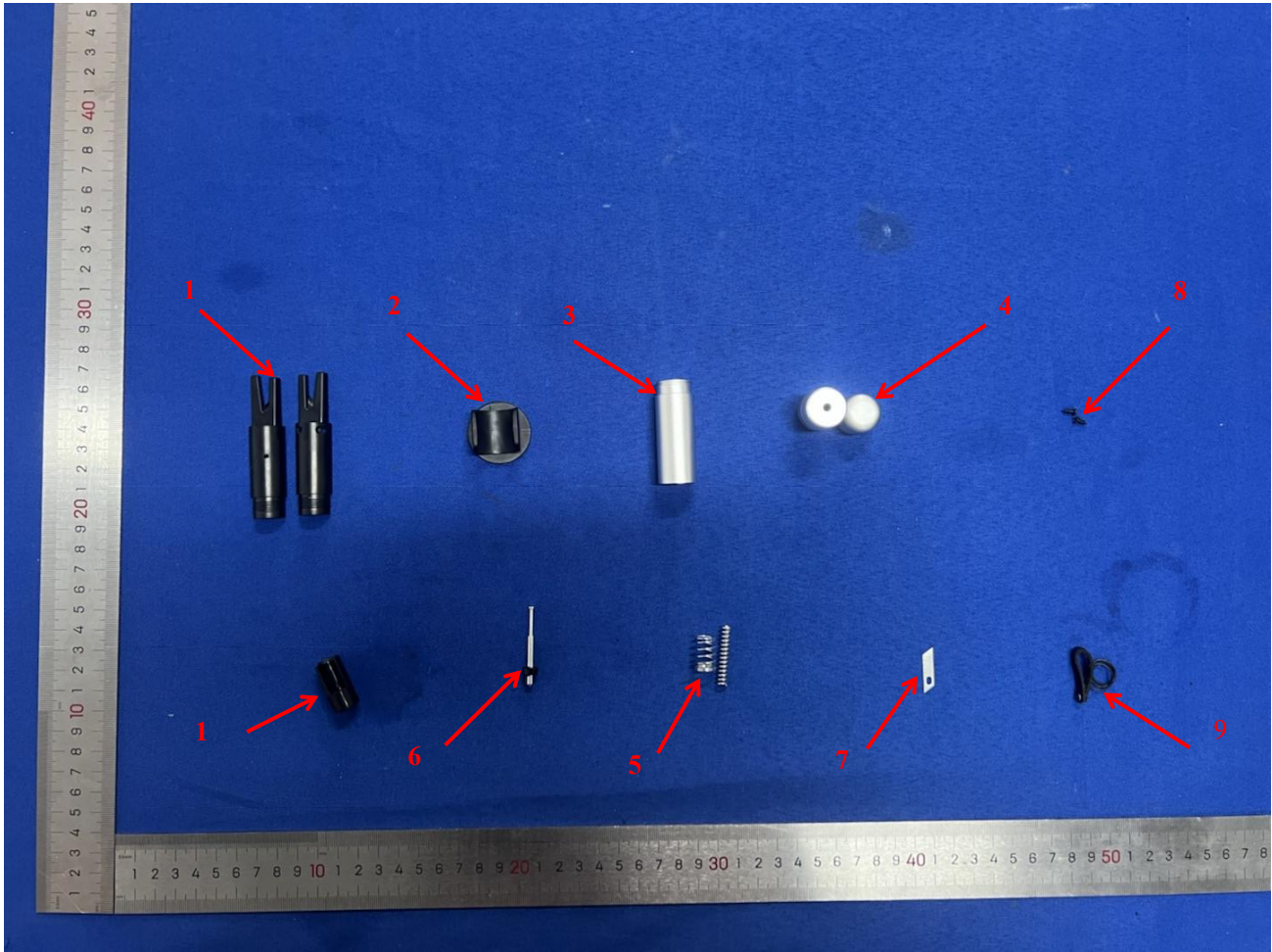
Test Report

Report No: BSTDG211221010701CR

Date: Dec. 08, 2021

Page 7 of 7

Sample Photo:



*** End of Report ***

This report shall not be altered, increased or deleted. The results shown in this test report refer only to the sample(s) tested. Without written approval of BST, this test report shall not be copied except in full and published as advertisement. BST Chemical Lab.

Dongguan BST Testing Co., Ltd.

A1201-1204 Xinsanqi of Dongbao Road, Dongcheng District,
Dongguan, Guangdong, China

Tel: 400-9626168/ 800-9990305

[Http://www.bst-lab.com](http://www.bst-lab.com)

E-mail: christina@bst-lab.com

Certificate of Compliance

Certificate No. : **BSTDG211221010701CC**

Applicant : **Shenzhen Yuhe Technology Co., Ltd**
: No. 16, Sanhe overseas Chinese zone 2, Tongsheng community,
Dalang street, Longhua District, Shenzhen

Manufacturer : **Shenzhen Yuhe Technology Co., Ltd**
: No. 16, Sanhe overseas Chinese zone 2, Tongsheng community,
Dalang street, Longhua District, Shenzhen

Product Name : **Vehicle mounted safety hammer**

Main Test Model : **PYC11**

Additional Model : **/**

Test Standard : **IEC 62321-4:2013+AMD1:2017, IEC 62321-5:2013,**
IEC 62321-6:2015, IEC 62321-7-1:2015,
IEC 62321-7-2:2017, IEC 62321-8:2017

As shown in the
Test Report No. : **BSTDG211221010701CR**

The EUT described above has been tested by us and found in compliance with the council RoHS 2 Directive 2011/65/EU Annex II (EU) 2015/863 as last amended by Directive (EU) 2017/2102. This certificate is only valid in conjunction with the test report.



RoHS

.....
Christina Deng
Manager
Dec. 8, 2021

Dongguan BST Testing Co., Ltd

Add: A1201-1204 Xinsanqi of Dongbao Road, Dongcheng District, Dongguan, Guangdong, China

Certificate Search: <http://www.bst-lab.com>, Tel:400-962-6168, 800-9990305, E-mail: christina@bst-lab.com

Certificate of Conformity

Certificate's Holder : **Shenzhen Yuhe Technology Co., Ltd**
Address : Intersection of Huafan Road and Industrial Park Road in Dalang Street, Longhua District, Shenzhen

Manufacturer : **Shenzhen Yuhe Technology Co., Ltd**
Address : Intersection of Huafan Road and Industrial Park Road in Dalang Street, Longhua District, Shenzhen

Product Name : **safety hammer**
Product Model (S) : YH-77
Trade Mark : N/A

Related Standard(s): IEC 62321-3-1:2013, IEC 62321-5:2013, IEC 62321-4:2013+A1:2017
IEC 62321-7-1:2015, IEC 62321-7-2:2017 , IEC 62321-6:2015 ,
IEC 62321-8:2017

Certificate Number : HUAX230811041KC
Report No. : HUAX230811041KR

The product described above has been consolidated by us and found in compliance with the council RoHS 2.0 Directive 2011/65/EU Annex II (EU) 2015/863 as last amended by Directive (EU) 2017/2102. It is only valid in connection with the test report



Shenzhen Huaxiang Testing Co., Ltd
201, Building A10, Fuhai Information Port, Xinhe Community, Fuhai Street,
Bao'an District, Shenzhen City, Guangdong Province
Web: [Http:// www.hua-x.com](http://www.hua-x.com)
E-mail: huaxiang@hua-x.com Tel.:+86-0755-23010432

